



Plumstead Manor School

Success • Harmony • Excellence • Justice



Prospectus



“Intelligence plus character – that is the goal of true education.” Martin Luther King Jr

Welcome to Plumstead Manor School



Welcome to Plumstead Manor, a thriving girls' school, with a mixed Sixth Form, committed to educating confident young people who will go out into the world and change it for the better.

The values of excellence and justice, success and harmony are at the heart of our community. We have high aspirations for academic scholarship, set alongside high expectations for behaviour and personal development, which embody our commitment to seeing all our students flourish and succeed.

Academic excellence is vital for our students so they are equipped with the knowledge and skills to maximise their potential, and realize their ambitions. At the same time we want them to develop into articulate and accomplished young people, who can confidently take their place in the world. These are the key ingredients of future personal and economic well-being, and they lay the foundations for a fulfilling life, and a fairer and more just society.

Our focus is to nurture young minds by providing the highest quality of teaching, in a safe and friendly environment. We are utterly focused on challenging all our young people, extending opportunities for them so that they leave us with the powerful knowledge and essential skills that will help them flourish as adults.

We are an inclusive and caring community which celebrates the diversity and rich tapestry of people who make up our school. We are committed to making sure young people find their voice, and have their view heard. Our students are active leaders in our community. That is why the 'Plumstead Manor Qualities' of curiosity, collaboration, discipline, resilience and imagination underpin everything we do as they are the keystones of future success, and support our young people in developing into confident and independent adults ready to change the world for the better.

Our pastoral system is a hallmark of our success. We want our students to be part of a safe and caring community, in which young people of all backgrounds and abilities are respected and cherished. Each year group has a Head of Year, and every student will be in a tutor group with a Form Tutor. This means in a large community such as ours that every girl is known, and that she has trusted adults around her. In this I am privileged to work with a team of highly experienced people who are skilled at supporting the development of every student into well rounded individuals.

The school has benefited from a rebuild and refurbishment under the Building Schools for the Future programme. We now have state of the art facilities for students, with specialist areas for performing arts and Post 16 provision. These facilities match the world class education we aim to provide.

The best way for you to truly understand our community is to see us in action. We are open every Tuesday morning to visitors, so that you can get a good understanding of how we work. Please visit our website for more details, and follow the regular updates on our school Facebook page to find out what's been going on and for upcoming events.

I look forward to meeting you soon and sharing with you the delights that we have to offer.

Douglas Greig
Head Teacher

Nurturing Young Minds Promoting Excellence and Equality

Raising Aspirations, Securing Success

We offer a **personalised and rounded education** at Plumstead Manor, providing our girls with academic excellence in a supportive and caring environment. Knowledge and academic excellence are important to us. The building blocks of these are a broad and balanced curriculum in which all our girls are exposed to the essential subject disciplines which will secure their future well-being and success. We believe that all students can learn, and that ability is not fixed. We challenge all our young people so that they can reach the highest academic standards while developing a love of learning to sustain them through their lives.

Key Stage 3 Curriculum – Years 7, 8 and 9

All students follow a broad range of subjects, with opportunity for stretch and challenge at all stages.

The Core: all students have 4 lessons a week of English and Maths and 3 lessons of Science (which rises to 4 in Year 9). They also have lessons in PE, Religious Education and Computing (ICT). All students also follow a Personal Development course which covers areas such as PSHE, Citizenship, Sex and Relationships Education, and Careers Advice and Guidance.

The Arts: we are proud of our pedigree and history in the Arts. All students study Art, Dance, Drama and Music for one lesson each week until they make their option choices in Year 9.

Design Technology: students have 2 lessons of DT each week and follow a curriculum made up from Food Technology, Textiles, Resistant Materials and Electronics.

Humanities: students study both Geography and History and have 2 lessons per week.

Languages: we offer all students the chance to study either French or Spanish. Students have 2 lessons of languages each week. As part of our commitment to challenge and stretch young people we offer some students the chance to do German as a second language.

Accessibility: the Key Stage 3 Curriculum is common to all students, but we do tailor it to suit the needs of different girls. In some subjects this means setting, and in others it can be about creating groups where students will receive a highly differentiated curriculum.

Key Stage 4 Curriculum - Years 10 and 11

The Key Stage 4 curriculum is made up from the core subjects of English, Maths, Science, Religious Education, ICT and PE.

Students continue to follow a Personal Development course which covers areas such as PSHE, Citizenship, Sex and Relationships Education, and Careers Advice and Guidance.

Alongside these core subjects, students choose three options from a selection of GCSEs and where appropriate vocational subjects including BTECs and OCR Nationals. Students make their choices in Year 9 after a careful programme of personalised support and guidance. We have made sure that there are clear pathways from Key Stage 4 onto 6th Form Courses so that the girls can plan their education and training consistently from Years 10 and 11 into Years 12 and 13. Our current options include: Art, AS Level Creative Writing, Business Studies, Child Care, Dance, Drama, Food Technology, French, Geography, Higher Personal Qualification, History, Music, PE, Product Design, Spanish, Statistics, and Textiles.

Extra Curricular Activities:

Providing opportunities for students in Key Stage 3 and 4 to stretch their horizons and extend opportunities for them are very important to the experience of being at Plumstead Manor School. A rich array of activities include day trips, visiting speakers, residential journeys, clubs, school productions and performances, working professionals and experts in their field.



“Education is not the filling of a pail,
but the lighting of a fire.” W.B. Yeats

Challenge and Creativity

We are proud to be a successful comprehensive school with a diverse community. We believe that all young people deserve the best education - the chance to be exposed to academic excellence in a **nurturing and safe environment**.

All young people will do their best if they are **challenged and stretched**. Our role is to empower them to reach beyond what they currently know, and can do, throughout their time at Plumstead Manor.

It is this that will provide them with the tools to succeed, and **foster a love of learning** to sustain them throughout the lives.

We have a very well developed and **tailored provision for more able students**. Crucial to this is to identify potential quickly and set high expectations early on in a culture of aspiration and success.

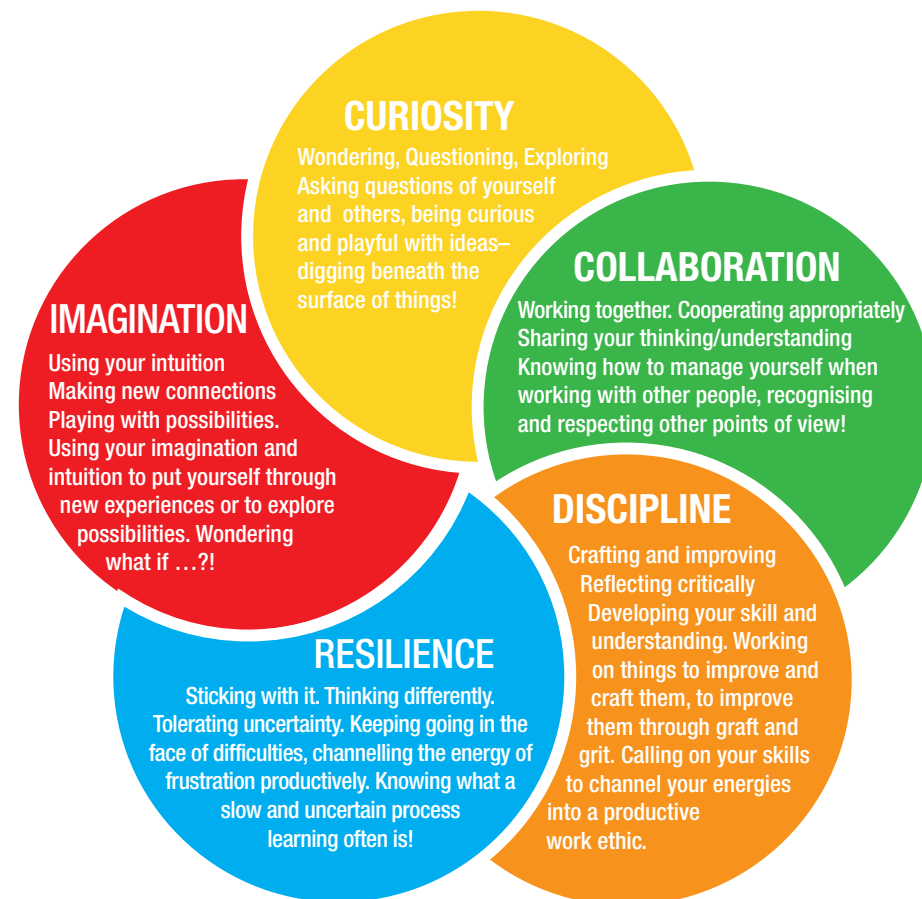
We offer our more able students **broader opportunities** such as studying two languages, following a GCSE Statistics course and doing it early, as well as the opportunity to work with older students and to work as peer mentors. We have now grown this extension curriculum to include the Higher Project qualification (Level 2) and AS Level Creative Writing. A vital part of this is to start their thinking about future ambitions early, and we offer a wider programme of university, college and work based visits from Key Stage 3 to make sure we maximise aspirations for our more able students.

We have well resourced facilities for students with **specific learning needs**. There is more information about this later in the prospectus.

For all students moving from primary school our commitment to stretching and challenging them means we place a firm emphasis on a **flying start** in Year 7 so we 'lift off' from where they left primary school.

At the heart of learning at Plumstead Manor is a firm belief that **young people can get better at things**, and they will do this if they are placed in challenging situations, with sufficient support to spark their imagination and creativity.

Our approach to learning and teaching places several key qualities or attributes as central to the future success of our students. They are curiosity, collaboration, discipline, resilience, and imagination and are shown in the 'rose diagram' on this page. Focusing on these qualities will result in higher attainment, better progress and ultimately better grades and outcomes. They are the dispositions that bind together the powerful knowledge and deep understanding vital to future success.



Our curriculum is built around these qualities, and so is our praise and reward system. Teachers plan schemes of learning with them at their heart and embed them into lessons. They are so very important because they help young people understand how they learn and so help them to become even more successful in the future.

“Pursue the things you love doing, and then do them so well, that people can’t take their eyes off you.” Maya Angelou



Cultivating Harmony and Success

We want our students to be part of a safe and caring community, in which people of all backgrounds and abilities are respected and celebrated. Each girl will be in a tutor group of 30 other students, each with their own Form Tutor. We believe strong partnerships with parents/carers are fundamental to ensuring that students are able to develop their skills and achieve to the best of their ability and the role of the Form Tutor is a highly valued position within the school.

We also have a well-developed Personal Development Curriculum that ensures our girls are provided with the social and emotional tools to meet the challenges they will face in a diverse community, as well as the highest quality advice and guidance about their future pathways. We believe in nurturing young minds, and providing a high level of care to ensure that students are best prepared for learning and the future.

We are firmly committed to developing opportunities for student voice and leadership. We have Head Girls, and a Head Boy in the Sixth Form, who also act as our Student Governors. They lead and coordinate our school council, through which Year Councils in Years 7 to 13 feed their thinking, and raise questions and discuss issues. They have had significant impact in the last year with the coordination of Non-Uniform Days, Charitable fund raising, the installation of new furniture in the post 16 area, and helping us to develop our praise and reward programme.

In the boxes on the right we provide you with two examples of the broader education we provide at Plumstead Manor which sees academic excellence blended with the highest quality personal and social development as crucial to the future success of our young people.

Extra Curricular Opportunities

We offer a wider range of extra curricular activities which include after school provision, provision during the holidays, as well as activities that take place during the school day. We encourage all our students to take part in this offer as their wider education and experience is a crucial part of their development. Some of the things we've had on offer include:

- Science Club
- Design Engineering Club
- A Capella Choir
- Gospel Choir
- Drama Productions
- Dance Club
- Duke of Edinburgh Award
- Trampolining
- Badminton
- Total Hockey
- Fitness Club
- Rowing Club (indoor)
- Basketball
- Polyglot Club

More Able and Talented

Identifying potential early on, and making sure students get off to a flying start is part of our commitment to 'challenge for all'. However, we also have a specific programme for our more able and talented students. This includes the opportunity to extend and enrich their curriculum experience, to take on leadership roles, but also to get high quality advice and guidance about their future pathways early on. This is why we:

- offer our most able students the chance to study a second language from Year 8.
- provide the opportunity to work alongside scientists who experts in the field including the Institute of Physics, and the Royal Observatory.
- take students from Year 8 upwards on trips to universities, including Oxford and Cambridge, to take part in general visits as well as subject specific programmes.
- offer opportunities to take on leadership roles such as being a reading mentor, or teaching primary school students.
- offer an Extension Curriculum in Key Stage 4 which allows our most able students to follow extra subjects and studies in GCSE Statistics, the Higher Project Qualification (Level 2), and AS Level Creative Writing.



“Education is the most powerful weapon
you can use to change the world.”

Nelson Mandela



Physical Education

Physical Education at Plumstead Manor School offers a broad and balanced curriculum with a strong extra-curricular programme. All students are encouraged to challenge themselves in order to exceed expectations and to support their physical and social development. Students develop their understanding of health and fitness and the importance of an active healthy lifestyle which enables them to make informed choices about the activities they participate in outside of school and in the future.

Key Stage 3

In **Year 7** students participate in a range of activities including Athletics, Basketball, Football, Gymnastics, Trampolining and Rounders. In **Year 8**, students continue to develop their skill level and tactical awareness in the range of sports students studied during Year 7. In **Year 9**, students broaden their horizons further by participating in Dance, Badminton, and the Young Leader Award. The Young Leader Award is an excellent introduction to leadership and gives learners the knowledge of how to organise and lead small games and activities. This supports the development of organisational, communication and team work skills, as well as helping to build confidence and self-esteem as they take on the responsibility of leading their peers and younger children. In this way we nurture the girls in the pursuit of excellence but also develop a rounded set of skills that will help them go out into the world and change it for the better.

Key Stage 4

As well as core PE lessons in **Years 10 and 11**, students are able to choose GCSE PE to study as one of their options. GCSE PE is studied over three lessons. Students participate in a range of activities including Trampolining, Netball, Personal Survival, Fitness, Circuit Training, Rock Climbing, Indoor Rowing, Athletics and Rounders. Students also carry out one piece of controlled assessment which involves analysing their own and others' performances, identifying areas of strength and areas of development. It's all about developing sporting prowess, as well as the essential skills so important to modern life.

Developing Future Leaders, Future Change Makers

We also offer all students in Years 10 and 11 the chance to further develop their leadership skills further by participating in the Sports Leader Level 2 Award or the Dance Leaders Award. The Level 2 Award builds on the skills developed in the Young Leader Award. Students continue to develop their organisation, motivation and communication skills but also focus on positive role models in sport, how to mentor others and how to use leadership in a variety of settings.



“We do not need magic to change the world, we carry all the power we need inside ourselves already: we have the power to imagine better.”
J.K. Rowling



Excellence and Equality for All

Inclusion Provision

We are a fully comprehensive school and are proud to offer an education to girls of all abilities and backgrounds. We celebrate this diversity, and also recognise that some young people need a different approach. This is why inclusion is at the heart of what we do and there are several key parts of our school that specialise in meeting the needs of learners with specific needs or difficulties.

Learning Support Department

The department provides additional support for students with special educational needs (SEN). The Learning Support Team tailors our support to individual student needs. Our provision has a very clear focus on working with subject departments, including assisting subject teachers in developing a variety of differentiated materials and strategies to enable all learners to succeed. Another tier of what we do is small withdrawal groups, offered to selected students to develop their basic literacy and numeracy skills. The Department also coordinates the provision of a nurture curriculum in Key Stage 3 and an alternative curriculum in Key Stage 4. As an inclusive school all students spend significant time within the mainstream during their week.

We also provide access to specialist services through the Learning Support Department: Speech and Language Therapists (SaLT) who provide language/social communication/functional life skills group sessions for all MLD students; the Educational Psychologist, who works with students who have significant and complex difficulties, in order to help them develop and progress.

Designated Special Provision

The Designated Special Provision (DSP) is an additional resourced centre open to students with significant moderate learning difficulties (MLD). The DSP adopts a holistic approach to academic, social and personal development and are constantly looking for ways to overcome barriers to learning, to social integration and to the full participation of all students in every aspect of school life. High priority is given to working in partnership with all parents/carers in meeting their daughters' needs. DSP students are supported in lessons and additionally receive differentiated teaching and learning experiences. The students are supported throughout the day. Personalised learning, opportunities for success, praise and high expectations both academically and socially are at the centre of the DSP's work.

EAL Department

At Plumstead Manor we have a large number of EAL (English as an Additional Language) learners who speak one or more other languages, and in some cases learners who are beginners in English. The EAL department provides a curriculum provision which ensures 'early help' with intensive and personalised support for these students when they need it. Our dynamic team of Bilingual Classroom Assistants (BCAs) in collaboration with mainstream teachers, offer in-class support to beginners/advance bilingual learners in their first language. We also provide:

- In class support and intervention.
- Multilingual support and liaison for whole school events (including translation). We are able to offer support in the following languages: Afrikaans, Arabic, Cantonese, Dutch, French, Hindi, Romanian, Somali, Tamil and Uneme.
- A wide range of after school clubs.
- Support for examination access for learners who qualify for it.

Achievement Centre for Excellence (ACE)

ACE is our on-site centre which offers learning support and sometimes a fresh start to a number of young people who may be finding mainstream education difficult, for a variety of reasons. The inclusion team is staffed by a small group of experienced and dedicated teachers and support staff who understand the social, emotional and behavioural barriers that often hinder or prevent progress in a larger class setting. Students are identified and referred to the centre by the KS3 and KS4 Heads of Year – this may be for selected lessons, a few weeks, or sometimes longer, depending on the needs of the individual.

Students are generally taught in small groups (maximum of six students per class) and they follow the main aspects of the school curriculum. They also have access to the therapeutic support that may be needed to get them back on track. This may include counsellors, mentors, transition support, focused workshops and practical lessons to engage and motivate.





Excellence and Equality for All

Equal Opportunities

We are proud of our inclusive and caring community, and offer an entitlement to learn and flourish in a safe, friendly and disciplined environment. We want all young people to be respected, nurtured, and included. We actively promote tolerance, responsibility and kindness, as well as providing our young people with the resilience, confidence and 'know how' to lead healthy and successful lives. We strongly reinforce the importance of equality of opportunity at Plumstead Manor. It simply means that everyone should be included and nobody should be left out.

Students are taught to celebrate diversity as we are all different and every member of our community deserves the right to feel valued. They are encouraged to challenge any form of prejudice and to respect and celebrate difference. We promote equality of opportunity through our curriculum, in particular our Personal Development programme, tutorial programme and assemblies. We live in an unequal world and our role as a girls' school is to support our young women in developing the confidence and knowledge to go on to change the world for the better.

Homework

Homework is an essential ingredient of learning and success at Plumstead Manor. It is an opportunity for the girls to embed the knowledge and skills they've been exposed to in class, and provides them with the chance to develop the crucial habits we see as central to learning at our school - imagination, discipline, resilience, collaboration and curiosity.

The school publishes clear homework calendars, and all students in Year 7 will receive homework from every subject at least once a week. This does make sure they have sufficient homework to be stretching but that is sufficiently spread out and varied to make sure no student becomes overloaded with tasks. Later in Key Stage 3 and Key Stage 4 we operate a similar timetable but the volume and complexity of the tasks to complete are much higher - and require a greater commitment of time and effort. At Post 16 students receive on average 5 hours of homework a week per subject.

Attendance & Punctuality

We ask parents for their support in encouraging their daughter to attend school regularly, and to appreciate both the legal and social importance of good attendance and punctuality. We expect more than 95% attendance from students as this is crucial in preparing them for the world of higher education or work. Coming to school regularly is a very important ingredient of future success. Evidence clearly shows that more than 15 days absence in a year can result in an average reduction of one whole GCSE grade in achievement.

Punctuality is also extremely important at secondary school. Students are expected to be in school for registration by 8:20am, so that they can be organised and ready for registration at 8:30am. Those who are late without a valid reason will be expected to attend a 10 minute detention at the end of the school day.

School opens for students at 7.45am and closes at 5pm. Hungry Minds opens at 7.45am offering a breakfast service and a place to meet friends. The School Library opens at 8:00am. There is Homework Support every day after school in the Library until 5pm.

We aim to create a safe and nurturing community based on the guiding principle of mutual respect, where students feel happy and included. We aim to provide a learning environment free from any threat or fear, which is conducive to everyone feeling safe and valued so that they have the chance of doing their best.

All bullying is unacceptable and students who experience it will be supported. We will not tolerate name-calling, sexist, racist or homophobic comments - any kind of prejudice or intimidating behaviour. We are aware that these can take place in the digital world through the use of new technologies available today, and we have clear expectations about use of technology, as well as a robust e-safety curriculum.

We strive to reduce and to eradicate wherever possible instances in which students are made to feel frightened, excluded or unhappy. Our pastoral teams work hard to make sure young people have trusted adults around them who they can talk to and discuss any concern they might have. Through Key Stage Leaders, Heads of Year and Form Tutors there are many layers of adults available to support young people in this way. We work closely with parents and carers to communicate and deal with any instances that arise.



Plumstead Manor Sixth Form

Overview

High expectations and excellence are at the heart of the Sixth Form at Plumstead Manor. We are a diverse community that prides itself on providing the highest quality education and experience that meets the individual need and maximises aspirations for all our students.

We welcome both young men and women into the sixth form and equip all students with the vital knowledge and understanding, as well as rigorous skills, to access the most competitive courses and sought after jobs. We offer a blend of academic and vocational pathways to provide the powerful knowledge and relevant qualifications to secure success in the world of work and higher education.

Environment

Our new Sixth Form environment provides high quality, state-of-the-art, facilities creating a truly 21st Century learning environment. A modern, flexible, technology-rich learning environment engenders a sense of pride, place and ownership for everyone within our sixth form community.

Pathways to Success

Our broad and balanced curriculum ensures we provide access to Science, Technology, Engineering and Maths, alongside a depth of offer in the Performing, and Visual Arts and Humanities. We empower students to follow a mixture of pathways and believe that young people are best served by a rich offer and broader experience. The education we provide is rounded and based on excellence, and gives students the platform to be stretched and challenged, to kindle their resilience and to spark their imagination and lifelong love of learning.

At the heart of what we do is a personalised approach to the nurture and care of each individual. We pride ourselves on a strong pastoral system, but one which also provides the wider guidance and advice to ensure students get on to the right pathways to see them succeed after school. We are a harmonious community and our Sixth Form is an integral part of Plumstead Manor School. Student leadership and voice are at the core of the way we work and help foster a culture of high aspiration and excellence.

We have three pathways for our students to choose from. Students can choose to follow one pathway or a combination for a personalised learning pathway to allow all learners to realise their full potential. These pathways include an A-level, a Vocational Pathway and a Creative Arts Pathway.



Extra Curricular “The Plumstead Manor Experience”

Young women and men in the sixth form will have an abundant and enriching experience comprising of learning inside and outside of the classroom in an enriching environment which develops their self-awareness and self-potential to understand how to achieve goals they didn't know existed.

Students have the opportunity to participate in a range of extra curricular experiences including: Student Leadership/Student Voice; Duke of Edinburgh; Extended Project Qualification; Use of the gymnasium and fitness classes; Debating classes; Cookery classes; Summer Schools; Trips and Visits; Competitions; Performing Arts.



“We must believe that we are gifted for something, and that this thing, at whatever cost, must be attained.” Marie Curie



Governing Body

Head Teacher:

Mr Douglas Greig

Chair of Governors:

Mrs Sue Le Bas

Vice Chair of Governors:

Mr Stuart James

Mrs Heather St Clare

Parent Governors:

Mr James Ayanda

Mrs Karmen Harrison

Community Governors:

Ms Jane Farmer

Mr Terry Miller

Mrs Jaghir Sekon

Staff Governors:

Ms Michele Ferrara

Mr Michael Orford

LA Governor:

Mr Dick Quibell

Associate Governors:

Mrs Emily Leonard (Deputy Head)

Ms Tracy Morley (Interim Deputy Head)

Mrs Barbara McBrien (Business Manager)

Student Governor

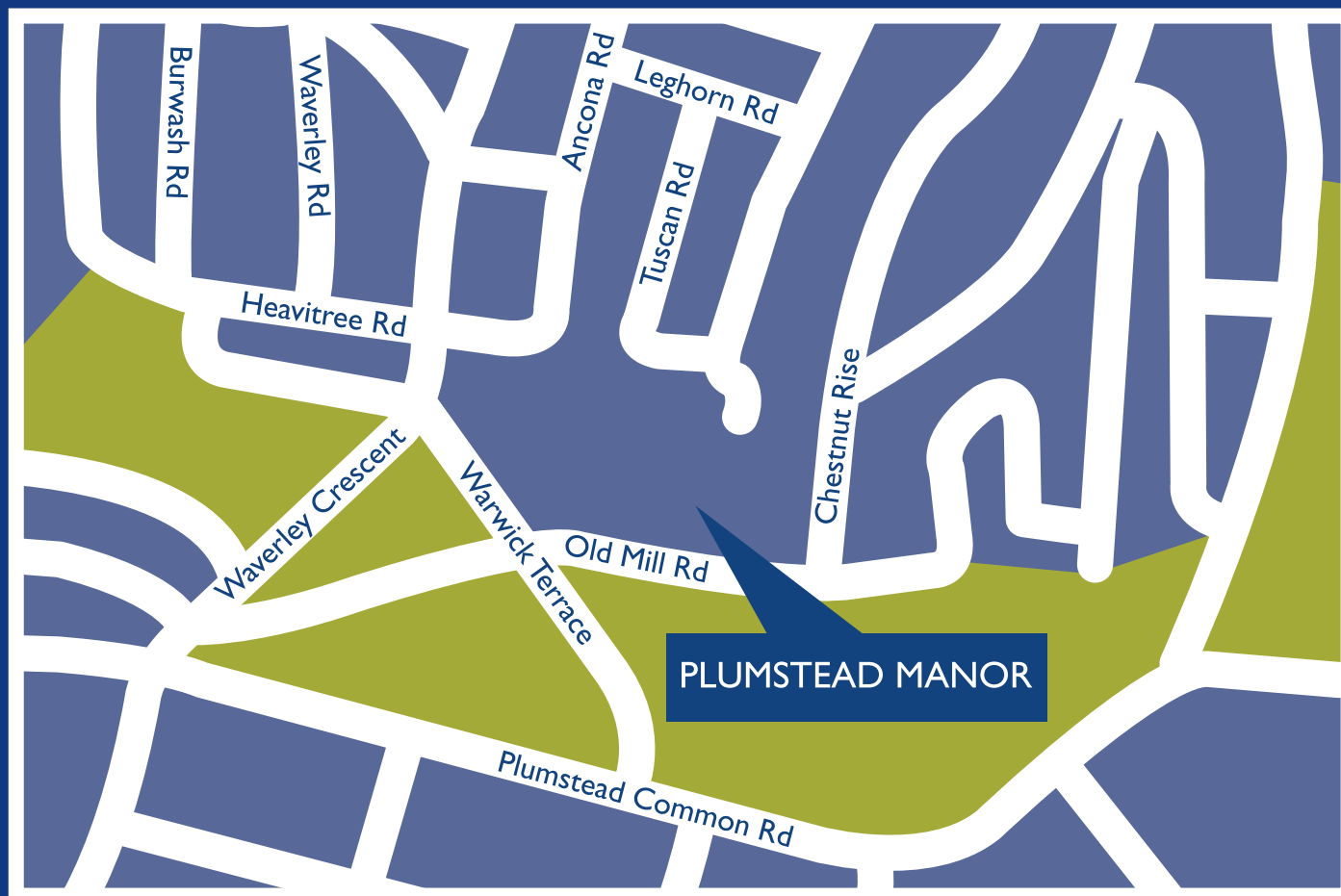
Student Governor

Clerk to the Governors:

Mrs Carol Ladbrook



Bus routes: 51, 53, 625, 658, 291



PLUMSTEAD MANOR SCHOOL
Old Mill Road London SE18 1QF
tel 020 3260 3333
email info@plumsteadmanor.com

For admissions contact:
The Royal Borough of Greenwich.
Education Admission Section
www.royalgreenwich.gov.uk

www.plumsteadmanor.com